



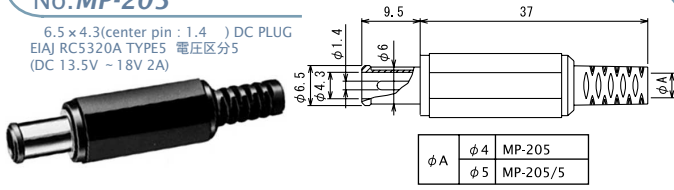
# DC PLUGS & JACKS

EIAJ RC5320A TYPE5 电压区分5 適合品

RATING 定 格 : DC18V 2A

## No.MP-205

6.5 x 4.3(center pin : 1.4 ) DC PLUG  
EIAJ RC5320A TYPE5 电压区分5  
(DC 13.5V ~ 18V 2A)



## No.MC-5325

DC ADAPTOR CABLE L=1800mm  
6.5 x 4.3(center pin : 1.4 ) DC PLUG  
EIAJ RC5320A TYPE5 电压区分5  
(DC 13.5V ~ 18V 2A)



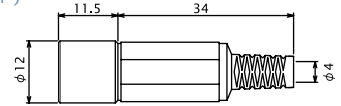
## No.MC-5325L

RIGHT ANGLE DC ADAPTOR CABLE L=1800mm  
6.5 x 4.3(center pin : 1.4 ) DC PLUG  
EIAJ RC5320A TYPE5 电压区分5  
(DC 13.5V ~ 18V 2A)



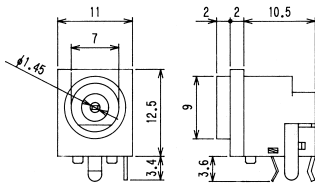
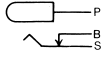
## No.MJ-085N

DC INLINE JACK  
PLUG TYPE: 6.5 x 4.3 ( Center pin: 1.4 )  
EIAJ RC5320A TYPE5 电压区分5  
(DC13.5V ~ 18V 2A)



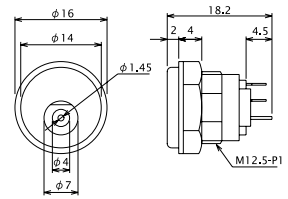
## No.M05-532A0

DC JACK FOR P.C.B.  
PLUG TYPE: 6.5 x 4.3(center pin : 1.4 )  
EIAJ RC5320A TYPE5 电压区分5  
(DC 13.5V ~ 18V 2A)



## No.MJ-20A

PANEL MOUNT DC JACK  
PLUG TYPE: 6.5 x 4.3(center pin : 1.4 )  
EIAJ RC5320A TYPE5 电压区分5  
(DC 13.5V ~ 18V 2A)



Marushin electric mfg. co., ltd