



DC PLUGS & JACKS

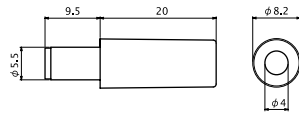
PLUG TYPE 5.5 × 2.1 & 5.5 × 2.5

No. **MP-121M**

5.5 × 2.1 DC PLUG (DC12V 0.5A)

No. **MP-122M**

5.5 × 2.5 DC PLUG (DC12V 1A)

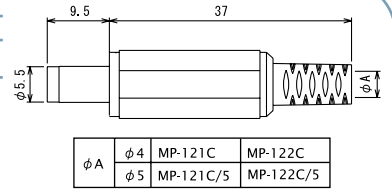


No. **MP-121C**

5.5 × 2.1 DC PLUG (DC12V 0.5A)

No. **MP-122C**

5.5 × 2.5 DC PLUG (DC12V 1A)



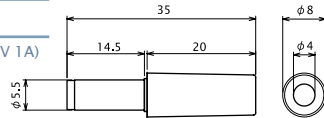
ϕA	$\phi 4$	MP-121C	MP-122C
	$\phi 5$	MP-121C/5	MP-122C/5

No. **MP-136**

5.5 × 2.1 LONG TYPE DC PLUG (DC12V 0.5A)

No. **MP-137**

5.5 × 2.5 LONG TYPE DC PLUG (DC12V 1A)

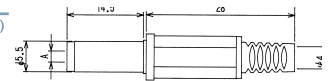


No. **MP-136H**

5.5 × 2.1 LONG TYPE DC PLUG (DC12V 0.5A)

No. **MP-137H**

5.5 × 2.5 LONG TYPE DC PLUG (DC12V 1A)

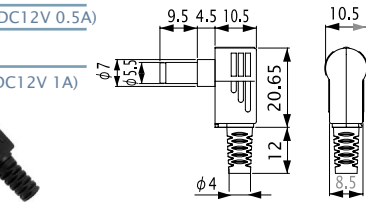


No. **MP-136LN**

5.5 × 2.1 RIGHT ANGLE DC PLUG (DC12V 0.5A)

No. **MP-137LN**

5.5 × 2.5 RIGHT ANGLE DC PLUG (DC12V 1A)



No. **MC-2374**

5.5 × 2.1 DC PLUG (DC12V 0.5A)

No. **MC-2375**

5.5 × 2.5 DC PLUG (DC12V 1A)



DC ADAPTOR CABLE L=1800mm

No. **MJ-179P**

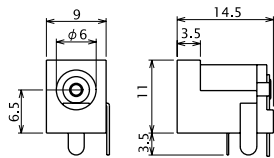
PLUG TYPE: 5.5 × 2.1 (DC12V 0.5A)

No. **MJ-180P**

PLUG TYPE: 5.5 × 2.5 (DC12V 1A)



DC JACK FOR P.C.B.



No. **MC-2374L**

5.5 × 2.1 DC PLUG (DC12V 0.5A)

No. **MC-2375L**

5.5 × 2.5 DC PLUG (DC12V 1A)



RIGHT ANGLE DC ADAPTOR CABLE L=1800mm

No. **MJ-179SMT**

PLUG TYPE: 5.5 × 2.1 (DC12V 0.5A)

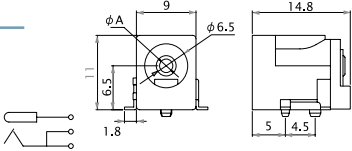
No. **MJ-180SMT**

PLUG TYPE: 5.5 × 2.5 (DC12V 1A)



DC JACK FOR P.C.B.

SMT



No. **MJ-196P**

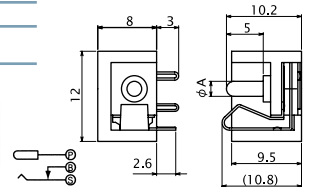
PLUG TYPE: 5.5 × 2.1 (DC12V 0.5A)

No. **MJ-197P**

PLUG TYPE: 5.5 × 2.5 (DC12V 1A)



DC JACK FOR P.C.B.



No. **MJ-179LE-C**

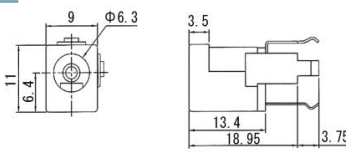
PLUG TYPE: 5.5 × 2.1 (DC12V 0.5A)

No. **MJ-180LE-C**

PLUG TYPE: 5.5 × 2.5 (DC12V 1A)



DC JACK FOR P.C.B.

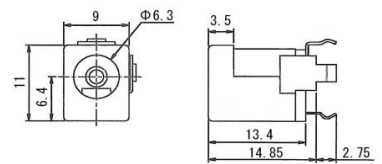


No. **MJ-292DJ-C**

PLUG TYPE: 5.5 × 2.1 (DC12V 0.5A)



DC JACK FOR P.C.B.

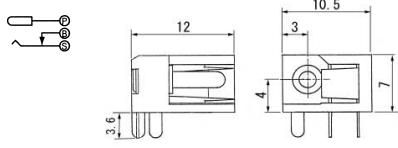


No. **MJ-272DJ**

PLUG TYPE: 5.5 × 2.1 (DC12V 0.5A)



DC JACK FOR P.C.B.



No. **MJ-10A**

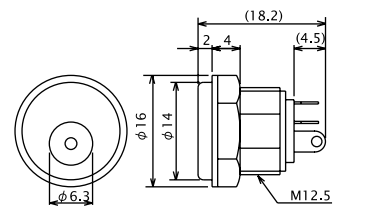
PLUG TYPE: 5.5 × 2.1 (DC12V 0.5A)

No. **MJ-11A**

PLUG TYPE: 5.5 × 2.5 (DC12V 1A)



PANEL MOUNT DC JACK

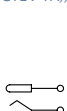


No. **MJ-14**

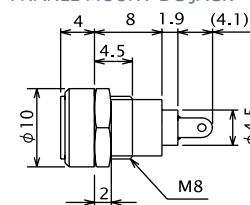
PLUG TYPE: 5.5 × 2.1 (DC12V 0.5A)

No. **MJ-15**

PLUG TYPE: 5.5 × 2.5 (DC12V 1A)



PANEL MOUNT DC JACK

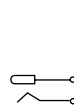


No. **MJ-60**

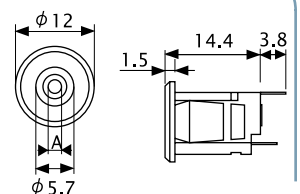
PLUG TYPE: 5.5 × 2.1 (DC12V 0.5A)

No. **MJ-61**

PLUG TYPE: 5.5 × 2.5 (DC12V 1A)



SNAP-IN MOUNT DC JACK





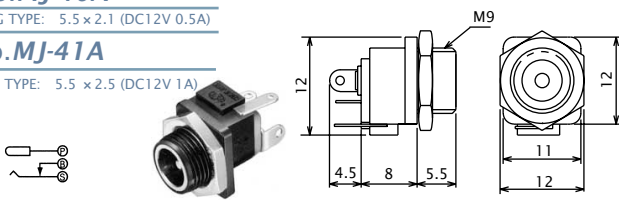
DC PLUGS & JACKS

PLUG TYPE 5.5 × 2.1 & 5.5 × 2.5

No. MJ-40A

PLUG TYPE: 5.5 × 2.1 (DC12V 0.5A)

PNANEL MOUNT DC JACK



No. MJ-41A

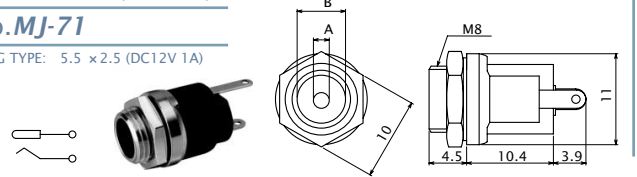
PLUG TYPE: 5.5 × 2.5 (DC12V 1A)



No. MJ-70

PLUG TYPE: 5.5 × 2.1 (DC12V 0.5A)

PNANEL MOUNT DC JACK



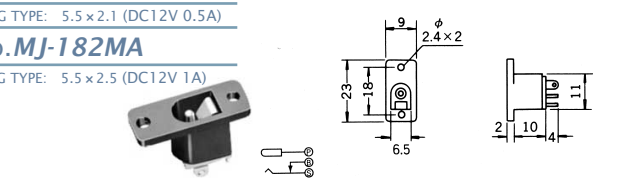
No. MJ-71

PLUG TYPE: 5.5 × 2.5 (DC12V 1A)

No. MJ-181MA

PLUG TYPE: 5.5 × 2.1 (DC12V 0.5A)

PNANEL MOUNT DC JACK



No. MJ-182MA

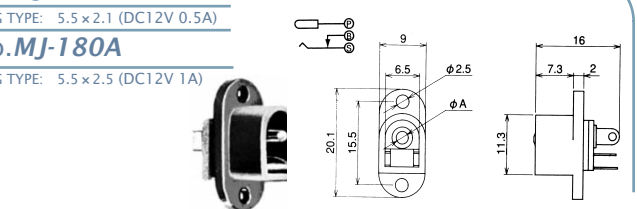
PLUG TYPE: 5.5 × 2.5 (DC12V 1A)



No. MJ-179A

PLUG TYPE: 5.5 × 2.1 (DC12V 0.5A)

PNANEL MOUNT DC JACK



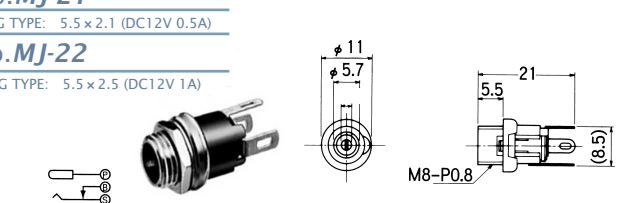
No. MJ-180A

PLUG TYPE: 5.5 × 2.5 (DC12V 1A)

No. MJ-21

PLUG TYPE: 5.5 × 2.1 (DC12V 0.5A)

PNANEL MOUNT DC JACK



No. MJ-22

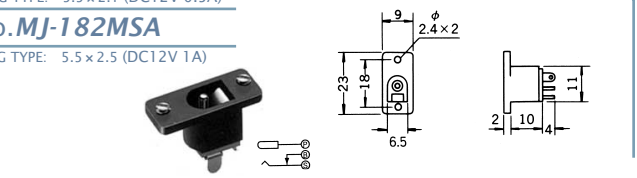
PLUG TYPE: 5.5 × 2.5 (DC12V 1A)



No. MJ-181MSA

PLUG TYPE: 5.5 × 2.1 (DC12V 0.5A)

PNANEL MOUNT DC JACK (SCREW TYPE)



No. MJ-182MSA

PLUG TYPE: 5.5 × 2.5 (DC12V 1A)

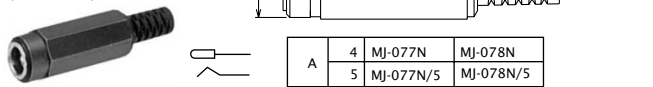
No. MJ-077N

PLUG TYPE: 5.5 × 2.1 (DC12V 0.5A)

DC INLINE JACK

No. MJ-078N

PLUG TYPE: 5.5 × 2.5 (DC12V 1A)



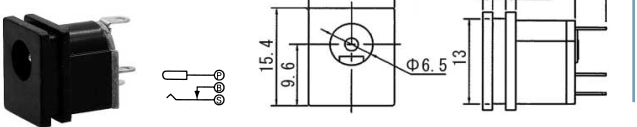
No. MJ-196E-C

PLUG TYPE: 5.5 × 2.1 (DC12V 0.5A)

DC JACK INSERT TYPE

No. MJ-197EX

PLUG TYPE: 5.5 × 2.5 (DC12V 1A)



No. MC-2376

PLUG TYPE: 5.5 × 2.1 (DC12V 0.5A)

DC EXTENTION CABLE L=1800mm

No. MC-2377

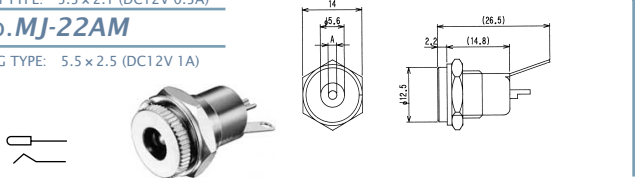
PLUG TYPE: 5.5 × 2.5 (DC12V 1A)



No. MJ-21AM

PLUG TYPE: 5.5 × 2.1 (DC12V 0.5A)

PNANEL MOUNT DC JACK



No. MJ-22AM

PLUG TYPE: 5.5 × 2.5 (DC12V 1A)

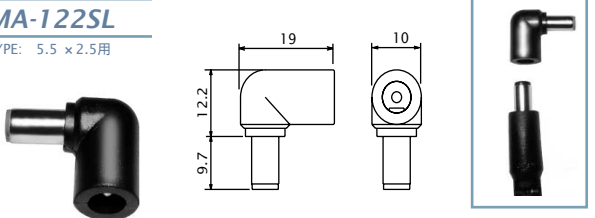
No. MA-121SL

PLUG TYPE: 5.5 × 2.1用

DC PLUG ADAPTOR STRAIGHT PLUG TO RIGHT ANGLE PLUG

No. MA-122SL

PLUG TYPE: 5.5 × 2.5用



No. MJ-23

PLUG TYPE: 5.5 × 2.1 (DC12V 0.5A)

DC INLINE JACK FOR MOLDING

No. MJ-24

PLUG TYPE: 5.5 × 2.5 (DC12V 1A)



Marushin electric mfg. co., ltd.



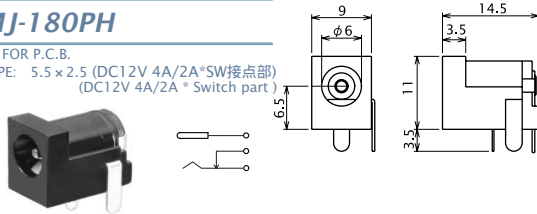
DC PLUGS & JACKS

PLUG TYPE 5.5x2.1 & 5.5x2.5 高容量タイプ High-capacity current type

No. MJ-179PH

DC JACK FOR P.C.B.
PLUG TYPE: 5.5x2.1 (DC12V 4A/2A*SW接点部)
(DC12V 4A/2A* Switch part)

* UL94V-0材使用
Use of flame retardant material (UL94V-0)



No. MJ-180PH

DC JACK FOR P.C.B.
PLUG TYPE: 5.5x2.5 (DC12V 4A/2A*SW接点部)
(DC12V 4A/2A* Switch part)



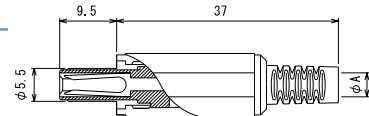
No. MP-121CF

5.5 x 2.1 DC PLUG (DC12V 4A)

* センターコンタクトをフォーク端子（音叉形）形状とし、接触の安定化を図りました。
Two-point contacts assure highly reliable electrical and mechanical connection

No. MP-122CF

5.5 x 2.5 DC PLUG (DC12V 4A)



φA	φ4	MP-121CF	MP-122CF
	φ5	MP-121CF/5	MP-122CF/5

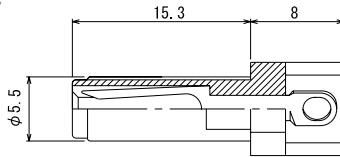
No. MP-121-1

5.5 x 2.1 DC PLUG FOR MOLDING
(DC12V 4A)

* センターコンタクトをフォーク端子（音叉形）形状とし、接触の安定化を図りました。
Two-point contacts assure highly reliable electrical and mechanical connection

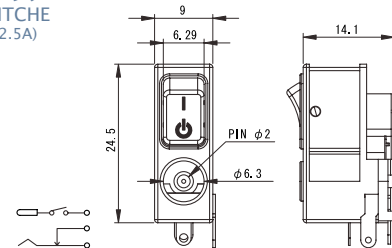
No. MP-122-1

5.5 x 2.5 DC PLUG FOR MOLDING
(DC12V 4A)



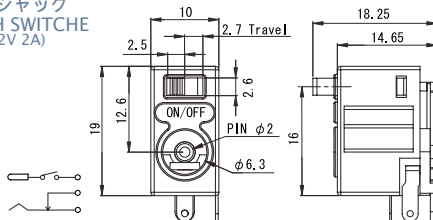
No. MJ-R02

ON-OFFスイッチ付DCジャック
DC POWER JACK WITH SWITCH
PLUG TYPE: 5.5x2.1 (DC12V 2.5A)



No. MJ-S04

ON-OFFスイッチ付DCジャック
DC POWER JACK WITH SWITCH
PLUG TYPE: 5.5x2.1 (DC12V 2A)



Marushin electric mfg. co., ltd