



DC PLUGS & JACKS

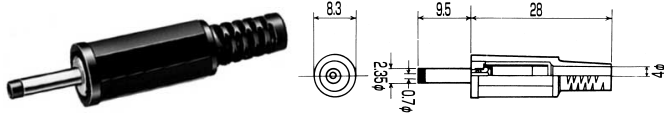
EIAJ RC5320A TYPE1

電圧区分1 適合品

RATING 定 格 : DC3.15V 2A

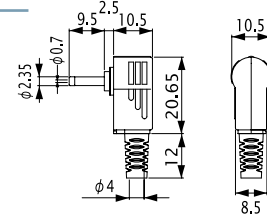
No. MP-201

2.35 × 0.7 DC PLUG
EIAJ RC5320A TYPE1 電圧区分1
(DC 3.15V Max)



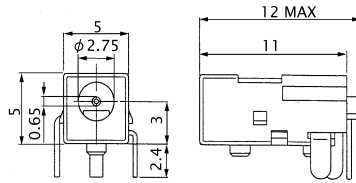
No. MP-201LN

2.35 × 0.7 DC PLUG
EIAJ RC5320A TYPE1 電圧区分1
(DC 3.15V Max)



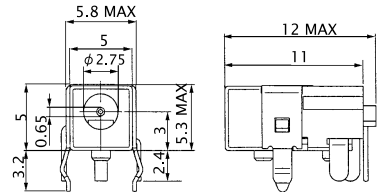
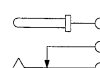
No. M04-450DJ

DC JACK FOR P.C.B.
PLUG TYPE: 2.35 × 0.7
EIAJ RC5320A TYPE1 電圧区分1
(DC 3.15V 2A)



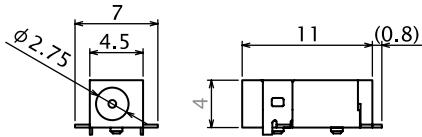
No. M04-451DJ

DC JACK FOR P.C.B.
PLUG TYPE: 2.35 × 0.7
EIAJ RC5320A TYPE1 電圧区分1
(DC 3.15V 2A)



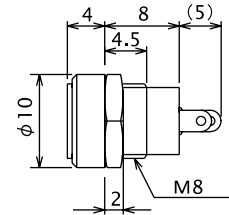
No. M04-959A0

DC JACK FOR P.C.B.
PLUG TYPE: 2.35 × 0.7
EIAJ RC5320A TYPE1 電圧区分1
(DC 3.15V 2A)



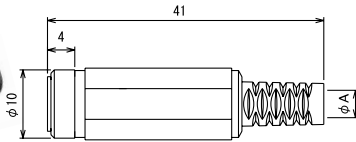
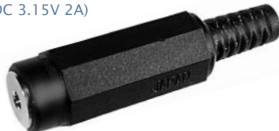
No. MJ-16

PANEL MOUNT DC JACK
PLUG TYPE: 2.35 × 0.7
EIAJ RC5320A TYPE1 電圧区分1
(DC 3.15V 2A)



No. MJ-095N

DC INLINE JACK
PLUG TYPE: 2.35 × 0.7
EIAJ RC5320A TYPE1 電圧区分1
(DC 3.15V 2A)



φ A	φ 4	MJ-095N
	φ 5	MJ-095N/5